



Smoke Outlook

Central Oregon - Cedar Creek Fire

10/07 - 10/08

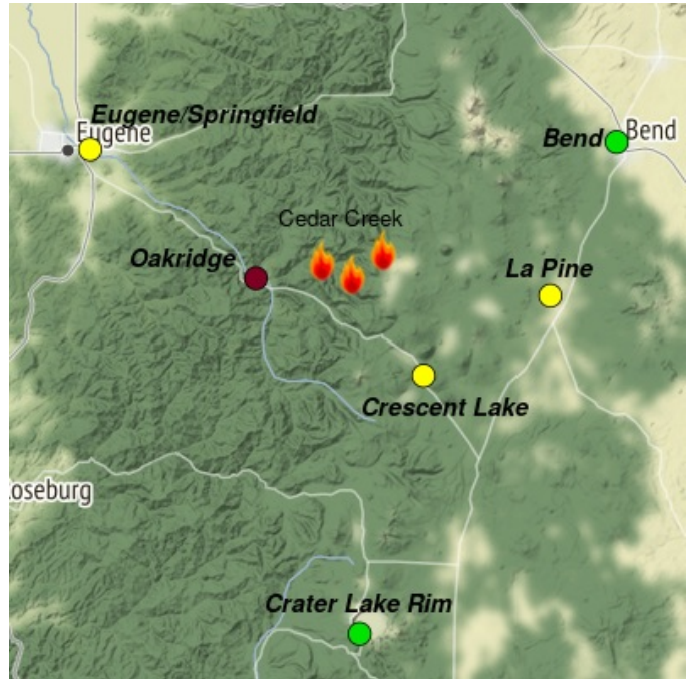
Issued by Wildland Fire Air Quality Response Program on October 07, 2022 at 08:42 AM PDT

Fire

The weather continues to be warm and dry with light and variable wind becoming west northwest in the afternoon. The fire is most active in the southwest area near Oakridge. Unburned pockets of fuel continue to smolder and produce smoke within the fire perimeter. For size, containment, and detailed information about the fire, see <https://inciweb.nwcg.gov/incident/8307/>

Smoke

Air quality conditions due to smoke are expected to be Good to Hazardous within the forecast area. Continued Unhealthy to Hazardous conditions persist in Oakridge with possible improved air quality in the late afternoon. Moderate air quality in Eugene will continue from yesterday's fire growth. Smoke impacts will be heavily dependent on fire activity.



Daily AQI Forecast* for Friday

Station	Yesterday hourly			Thu 10/06	Comment for Today -- Fri, Oct 07	Forecast*	
	6a	noon	6p			Fri 10/07	Sat 10/08
Bend					Expect Good air quality for the day.		
Crater Lake					Expect Good air quality for the day.		
Crescent Lake	No hourly data				Expect Moderate air quality today		
Oakridge					Unhealthy to hazardous AQ today with possible improvement in the late afternoon.		
Eugene/Springfield					Expect overall Moderate air quality.		
La Pine					Expect Good to Moderate air quality for the day.		

Issued Oct 07, 2022 by Ariane Sarzotti, ARA, ariane_sarzotti@nps.gov and Beth Anderson, beth.a.anderson@usda.gov

Air Quality Index (AQI)	Actions to Protect Yourself
Good	None
Moderate	Unusually sensitive individuals should consider limiting prolonged or heavy exertion.
USG	People within Sensitive Groups* should reduce prolonged or heavy outdoor exertion.
Unhealthy	People within Sensitive Groups* should avoid all physical outdoor activity.
Very Unhealthy	Everyone should avoid prolonged or heavy exertion.
Hazardous	Everyone should avoid any outdoor activity.

***Disclaimer:** This forecast is based on fine particulates only; ozone is not included. Forecasts may be wrong; use at own risk. Use caution as conditions can change quickly. See your health professional as needed. Smoke sensitive groups should take appropriate precautions.

Additional Links

[Oakridge Air](https://oakridgeair.org/) -- <https://oakridgeair.org/>

[AirNow Fire and Smoke Map](https://fire.airnow.gov/#) -- <https://fire.airnow.gov/#>

[Lane Regional Air Protection Agency](https://www.lrapa.org/) -- <https://www.lrapa.org/>

--



by Interagency Wildland Fire Air Quality Response Program -- www.wildlandfiresmoke.net

Central Oregon Updates -- <https://outlooks.wildlandfiresmoke.net/outlook/7f95b6c6>

*Smoke and Health Info -- www.airnow.gov/air-quality-and-health